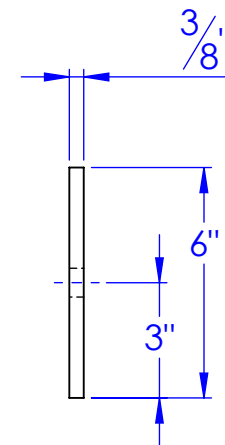
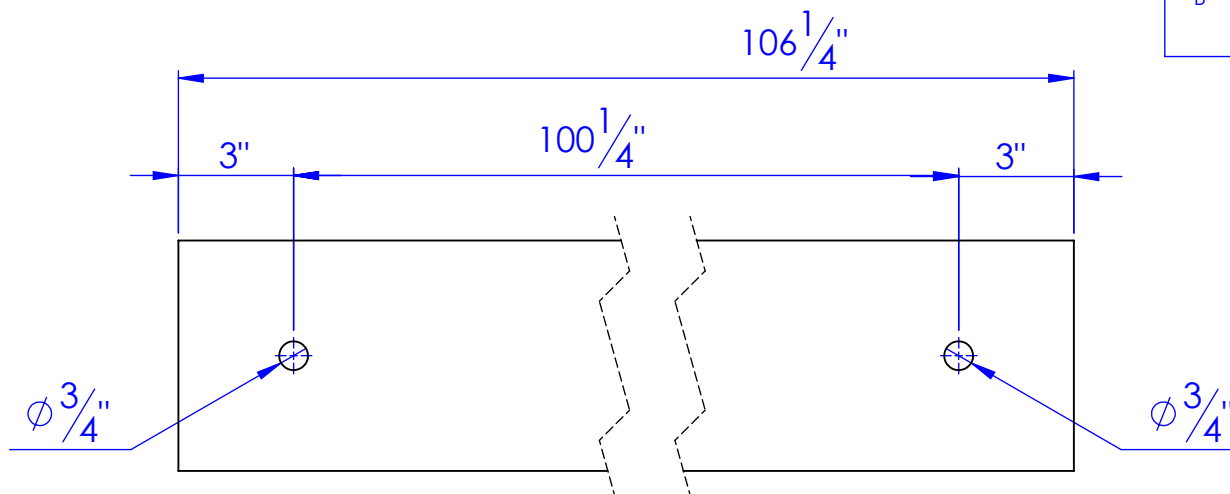


PART NUMBER	DESCRIPTION	Material	QTY.
ST-RL-3360 PS SIDE	LENGTH: 106 1/4", RL 3360 SIDE PASSENGER	FI 3/8x6	1

REVISIONS			
REV.	DESCRIPTION	DATE	APPROVED
A	INITIAL RELEASE	3/5/2022	HP
B	REVISED PART # TO ST-RL-3360 PS SIDE FROM FI.375 X 6 L 106.25 BSPS	1/16/2023	KD (BB)

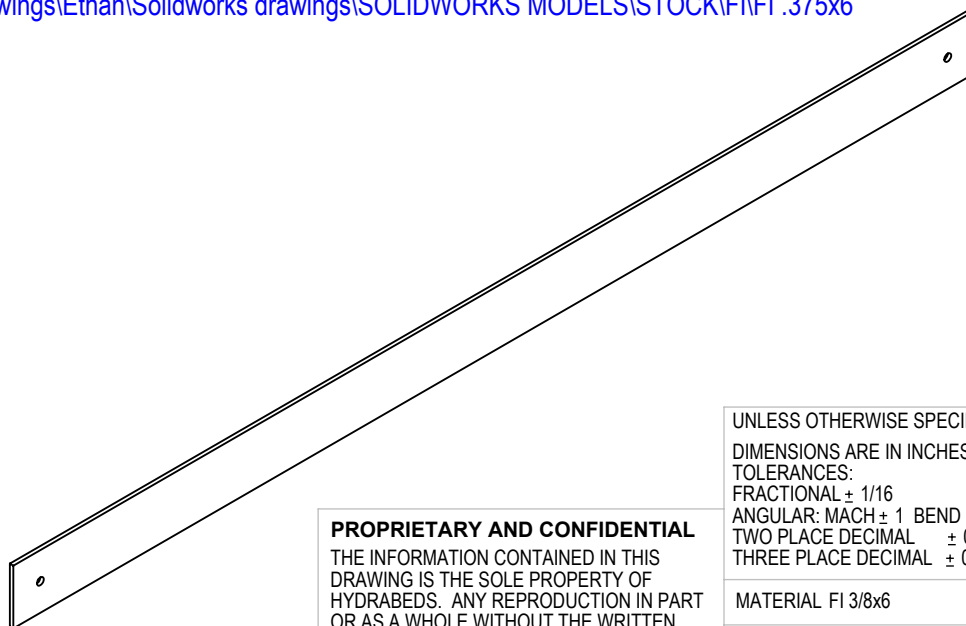


DRAWING LOCATION:

M:\Drawings\Ethan\Solidworks drawings\12 REEL LIFT\2X00 VENDOR DWG\2200 Floor

PART LOCATION:

M:\Drawings\Ethan\Solidworks drawings\SOLIDWORKS MODELS\STOCK\FI\FI .375x6



PROPRIETARY AND CONFIDENTIAL

THE INFORMATION CONTAINED IN THIS DRAWING IS THE SOLE PROPERTY OF HYDRABEDS. ANY REPRODUCTION IN PART OR AS A WHOLE WITHOUT THE WRITTEN PERMISSION OF HYDRABEDS IS PROHIBITED.


UNLESS OTHERWISE SPECIFIED:

DIMENSIONS ARE IN INCHES
TOLERANCES:

FRACTIONAL $\pm 1/16$
ANGULAR: MACH ± 1 BEND ± 1
TWO PLACE DECIMAL $\pm .010$
THREE PLACE DECIMAL $\pm .005$

MATERIAL FI 3/8x6

DO NOT SCALE DRAWING

	NAME	DATE	P.O. BOX 248, SABETHA, KS 66534 (785) 284-3674 FAX (785) 284-3931	
DRAWN	ETHAN	1/16/2023		
PART #	ST-RL-3360 PS SIDE			
ASM #	Asm #			
COMMENTS:			LENGTH: 106 1/4", RL 3360 SIDE PASSENGER	
SIZE	DWG. NO.		REV	
A	12-2269		B	
SCALE: 1:20	WEIGHT: 67.70		SHEET 1 OF 1	